

# Gîte Lodges Spa du Mont Brûlé - Fuschia

4 rue de Briouze, 61450 LA  
FERRIERE-AUX-ETANGS

02 33 28 07 00

resa@orne.fr

Holiday vouchers

<https://www.gites-de-france-orne.com/cgi.php?&OPE=CDT61&ORI=CDT61&NUM=G08543&ACC=G&FICHE=O&INSTANCE=gites61&>

## Détail des tarifs :

**Week (appartement) : 450,00€**,  
(Off-peak season)

**Week-end (appartement) :**  
**150,00€**, (Off-peak season)

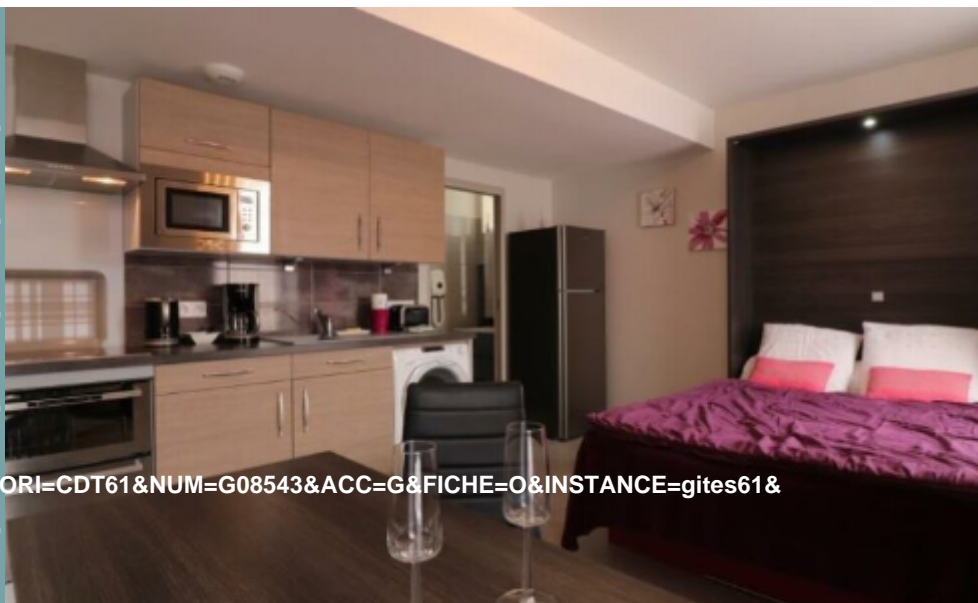
**Week (appartement) : 450,00€**,  
(Mid-season)

**Week-end (appartement) :**  
**150,00€**, (Mid-season)

**Week (appartement) : 450,00€**,  
(High-season)

**Week-end (appartement) :**  
**150,00€**, (High-season)

- Cleaning / housework
- Linen provided



## Présentation

Studio with a capacity of 2 people located in a two-storey residence with 4 apartments in total, in the village of La Ferrière aux Etangs. The Lodge du Mont Brûlé is a set of 4 apartments (sold together or separately) reserved for you on an all-inclusive basis and only 20 minutes from the spa resort of Bagnoles de l'Orne Normandy. Possibility of renting the whole set or each apartment separately and sharing the well-being area open 24 hours a day (spa and hammam): 1h30 access for 2 people included in the price. A few meters away: communal lake of 3 ha (fishing from March to September), all shops and restaurant, picnic area, petanque ground.

Entrance with telephone and tourist documentation. Private wellness area accessible to people with reduced mobility with infrared sauna, 2-person spa and shower room/wc. On the first floor: Lodge FUSCHIA: studio with kitchen, TV and retractable bed for 2 people, shower room/wc (washing machine and dryer). Garden furniture (no barbecue). Public parking a few meters away.



MONTAGNES  
DE NORMANDIE

